

Carl R. Darnall Army Medical Center



Technical Report 1

Evaluation of ASHRAE 62.1: Ventilation for Acceptable Indoor Air Quality
& ASHRAE 90.1: Energy Standard for Buildings except Low Rise Residential

Marissa Caldwell – Mechanical – William Bahnfleth

Table of Contents

Executive Summary	pg. 3
Mechanical Overview	pg. 4
ASHRAE 62.1 Compliance	pg. 5
Section 5. Systems and Equipment	pg. 5
5.1 Ventilation Air Distribution.....	pg. 5
5.2 Exhaust Duct Location.....	pg. 5
5.3 Ventilation system Controls.....	pg. 5
5.4 Airstream Surfaces.....	pg. 5
5.5 Outdoor Air Intakes.....	pg. 5
5.6 Local Capture of Contaminants.....	pg. 6
5.7 Combustion Air.....	pg. 6
5.8 Particulate Matter Removal.....	pg. 6
5.9 Dehumidification Systems.....	pg. 7
5.10 Drain Pans.....	pg. 7
5.11 Finned-Tube Coils and Heat Exchangers.....	pg. 7
5.12 Humidifiers and Water-Spray Systems.....	pg. 8
5.13 Access for Inspection, Cleaning, and Maintenance.....	pg. 8
5.14 Building Envelope and Interior Surfaces.....	pg. 9
5.15 Buildings with Attached Parking Garages.....	pg. 9
5.16 Air Classification and Recirculation.....	pg. 9
5.17 Requirements for Buildings Containing ETS Areas.....	pg. 9
Section 6. Procedures	pg. 10
6.2 Ventilation Rate Procedure.....	pg. 10
6.5 Exhaust Ventilation.....	pg. 11
ASHRAE 90.1 Compliance	pg. 12
Section 5. Building Envelope	pg. 12
5.1 General.....	pg. 12
5.2 Compliance Paths.....	pg. 12
5.5 Prescriptive Building Envelope Option.....	pg. 12
Section 6: Heating, Ventilating, and Air Conditioning	pg. 13
6.4 Mandatory Provisions.....	pg. 13
6.5 Prescriptive Path.....	pg. 13
Section 7: Service Water Heating	pg. 13

Section 8: Power.....pg. 13
Section 9: Lighting.....pg. 14
Appendix A: Tables and Charts.....pg. 16
Appendix B: Ventilation Calculations and Exhaust Ventilation Rates.....pg. 18
Appendix C: Lighting Power Density.....pg. 27

Executive Summary

Technical Report 1 analyzes the compliance of Carl R. Darnall Army Medical Center with ASHRAE Standards. The hospital is currently under construction, but began in December of 2010. It is located on the Army base of Fort Hood, Texas and is replacing the current hospital. Overall the building is over 937,000 sq ft, with multiple departments through the north clinic, south clinic, west clinic, and bed tower. The focus of the 62.1 and 90.1 evaluation is on the bed tower, levels 5 and 6. Level 5 is a medical surgery floor, and Level 6 is comprised of administrative offices. These two levels were analyzed with ASHRAE 62.1-2013 and ASHRAE 170-2013 for ventilation for acceptable indoor air quality, and ASHRAE 90.1 for the energy standard for buildings.

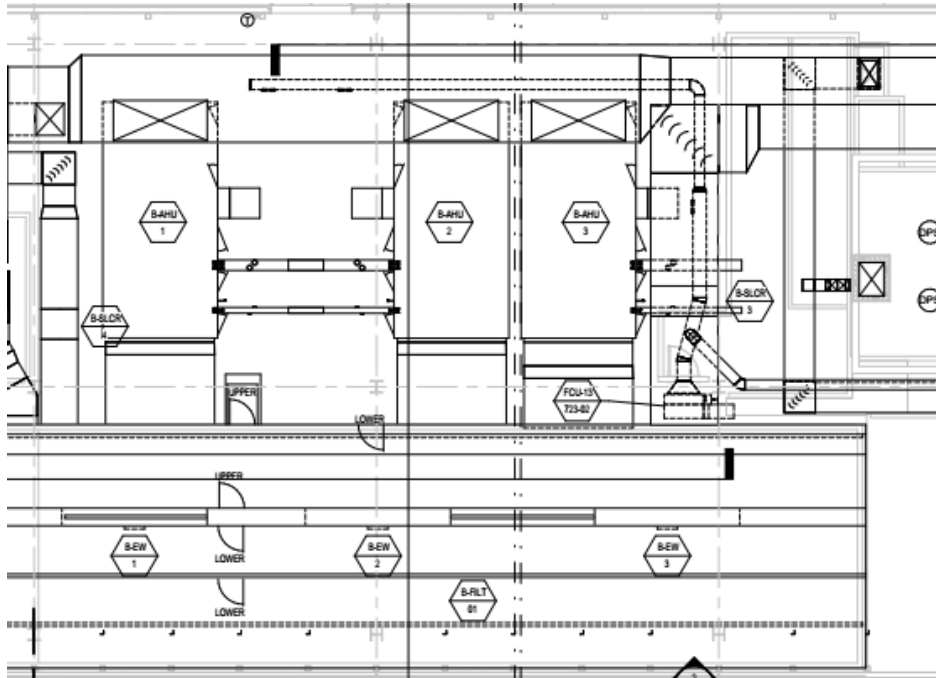
The army medical center complies with ASHRAE 62.1 through the prescriptive measures in chapter 5, systems and equipment. These measures include negatively pressurized exhaust ducts, ventilation system controls through the building automation system, location of outdoor air intakes and the proper sealing of a drain pan. The medical center also complies with ASHRAE 170. The major components of ASHRAE 170 were the two filtration banks required along with the high MERV filters, and the ventilation rates for procedure rooms. The medical center surpasses the ventilation rates of ASHRAE 170 for isolation and procedure rooms. This is partially due to the design team using UFC-4-510, the design criteria for medical facilities. Level 6 is not medical focused like level 5, but it does comply with ASHRAE 62.1 ventilation requirements as well as exhaust ventilation for acceptable indoor air quality.

ASHRAE 90.1 sets the minimum energy requirements for the army medical center to follow. Overall, the medical center meets the standard and even exceeds it because of the medical equipment demand for power and the medical staff's demand for lighting. All service water heating piping meets the minimum insulation, and the mechanical equipment meets the minimum efficiencies. The evaluation of ASHRAE 62.1, 170 and ASHRAE 90.1 proves the army medical center is compliant.

Mechanical Overview

The army medical center has an off-site central utility plant which consists of its chilled water plant and heating hot water plant. The medical center receives the services from an underground tunnel. The two heat recovery chillers help provide chilled water during colder weather, and it preheats the heating hot water return. It is base loaded, so during the winter, the centrifugal chillers and cooling towers do not need to run. Each centrifugal chiller is 1,250, and the heat recovery chillers provide a capacity of 150 tons. Overall, the system provides enough capacity for future air handlers. The chilled water system provides a supply temperature of 44°F to the air handlers, fan coil units for electrical and telecom rooms. The building uses hot water produced by three gas fired steam boilers. Chilled water from a heat recovery chiller, as well as three water cooled chillers. The heated hot water system provides a supply temperature of 140°F.

Floors 5 and 6 of the east bed tower are conditioned by two dedicated outdoor air system (DOAS) air handlers in the penthouse on the roof. Both air handlers have an enthalpy recovery wheel which recovers energy from the exhaust air. AHU-2 serves constant air volume terminal units on floor 5 which consists of the pediatric department, as well as, a general medical / surgical department. AHU-3 serves constant air volume terminal units on floor 6 which consists of offices for the departments, officers, and the medical library.



Compliance with ASHRAE 62.1 2013

5.1 Ventilation Air Distribution

Section 5.1 requires the ventilation air distribution system be completely adjustable in order to maintain the minimum ventilation airflow requirement. The constant air volume boxes, along with the diffusers in the rooms have adjustable dampers and control boxes to maintain the minimum. Although the medical center does not have a plenum return, it would require a device to maintain the minimum ventilation rate.

The drawing documentation states air balance testing should be made in accordance with Associated Air Balance Council (AABC), the National Environmental Balancing Bureau (NEBB), and the Sheet Metal and Air Conditioning Contractors' National Association (SMACNA).

5.2 Exhaust Duct Location

Since the patient rooms, operating rooms, and general medical rooms are exhausting possible hazardous contaminants, the exhaust ducts are negatively pressurized in accordance with section 5.2 of ASHRAE 62.1 in an event of a leak, the ducts would take in air instead of releasing it.

5.3 Ventilation System Controls

In order to meet the minimum outdoor ventilation load, all constant air volume terminal units have a control box, as well as dampers. The army medical center is controlled by open protocol DDC building automation system (BAS). The BAS program monitors all control points of the AHU's down to the thermostats in each patient room.

5.4 Airstream Surfaces

Since the ducts are susceptible to condensation, all ducts are constructed of sheet metal and are connected with metal fasteners and metal hangers. This complies with section 5.4 on airstream surfaces in relation to mold growth and corrosion.

5.5 Outdoor Air Intakes

ASHRAE 170 calls for at least a 10ft vertical distance from the roof to the exhaust outlet, and they should be located in order to minimize the recirculation of exhausted air. Although the exhaust fans are located in their own section of the roof far from the intake louvers,

they do not comply with the 10ft vertical distance ASHRAE 170 calls for. The distance of the outlet to the roof level is just shy of 10 ft. By having a separate section for the exhaust fans, they all meet the minimum separation distances as seen in table 1.

Proper applications were made in order to manage rain entrainment. There is a draining system in order to protect the outdoor air handling units from rain. The intake louvers are designed to angle properly to take in air without taking in rain, all of the air handlers also have insect screens.

TABLE 5.5.1 Air Intake Minimum Separation Distance

Object	Minimum Distance, ft (m)
Class 2 air exhaust/relief outlet (Note 1)	10 (3)
Class 3 air exhaust/relief outlet (Note 1)	15 (5)
Class 4 air exhaust/relief outlet (Note 2)	30 (10)
Plumbing vents terminating less than 3 ft (1 m) above the level of the outdoor air intake	10 (3)
Plumbing vents terminating at least 3 ft (1 m) above the level of the outdoor air intake	3 (1)
Vents, chimneys, and flues from combustion appliances and equipment (Note 3)	15 (5)
Garage entry, automobile loading area, or drive-in queue (Note 4)	15 (5)
Truck loading area or dock, bus parking/idling area (Note 4)	25 (7.5)
Driveway, street, or parking place (Note 4)	5 (1.5)
Thoroughfare with high traffic volume	25 (7.5)
Roof, landscaped grade, or other surface directly below intake (Notes 5 and 6)	1 (0.30)
Garbage storage/pick-up area, dumpsters	15 (5)
Cooling tower intake or basin	15 (5)
Cooling tower exhaust	25 (7.5)

Note 1: This requirement applies to the distance from the outdoor air intakes for one ventilation system to the exhaust/relief outlets for any other ventilation system.
 Note 2: Minimum distance listed does not apply to laboratory fume hood exhaust air outlets. Separation criteria for fume hood exhaust shall be in compliance with NFPA 45⁵ and ANSI/AIHA Z9.5.⁶ Information on separation criteria for industrial environments can be found in the *ACGIH Industrial Ventilation Manual*⁷ and in *ASHRAE Handbook—HVAC Applications*.⁸
 Note 3: Shorter separation distances shall be permitted when determined in accordance with (a) ANSI Z223.1/NFPA 54⁹ for fuel gas burning appliances and equipment, (b) NFPA 31¹⁰ for oil burning appliances and equipment, or (c) NFPA 211¹¹ for other combustion appliances and equipment.
 Note 4: Distance measured to closest place that vehicle exhaust is likely to be located.
 Note 5: Shorter separation distance shall be permitted where outdoor surfaces are sloped more than 45 degrees from horizontal or that are less than 1 in. (30 mm) wide.
 Note 6: Where snow accumulation is expected, the surface of the snow at the expected average snow depth constitutes the "other surface directly below intake."

Table 1: Air Intake Minimum Separation Distance ASHRAE 62.1 Table 5.5.1

5.6 Local Capture of Contaminants

Any noncombustion equipment discharging potentially hazardous contaminants are ducted and exhausted directly outdoors.

5.7 Combustion Air

Since the central utility plant is not located in the building, and is in its own building off site, section 6.7 on combustion air does not apply for the army medical center.

5.8 Particulate Matter Removal

Section 5.8 states the minimum MERV rating used for the filters must be 8. However, ASHRAE 170 states air must pass through two filtration banks, the effective MERV rating

should be at least MERV 12. The system abides by note C, that states, a MERV rating of 14 can be used for the second filter bank as long as there is a MERV 7 filter down stream of the terminal unit. Figure 1 shows the schematic of the two penthouse air handlers which shows one of the two filter banks.

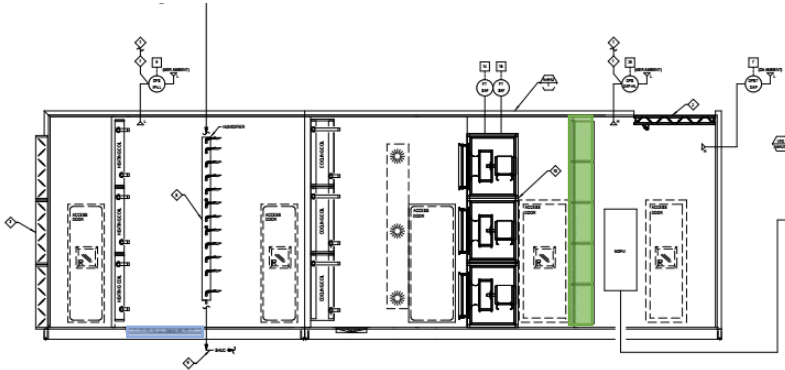


Figure 1 Air Handler Schematic

5.9 Dehumidification Systems

5.9 requires all air handlers must be designed to a relative humidity of 65%, the air handlers for the bed tower are designed to 59.3%. The building must intake outdoor air equal or more than the maximum exhaust airflow. This ensures a positive pressure in the building that limits the infiltration of untreated outdoor air.

5.10 Drain Pans

All air handlers must have a condensate drain pan for the cooling coils, with a slope of at least 0.125 in/ft., the medical center have air handlers that exceed this slope. The drain outlets are located at the lowest point of the pan in order to properly drain. A drain seal such as a P-trap is required if there is a negative pressure at the drain pan, however, the air handlers are blow through, so it is positively pressured at the drain pan. These drain pans are located under the water-condensing equipment, as well as they comply with the size mentioned in section 5.10.

5.11 Finned-Tube Coils and Heat Exchangers

As mentioned in section 5.10, drain pans are located under water producing equipment, they also have an access space of 18 inches in order to clean and maintain them. Figure 1 above shows the drain pans highlighted in blue. Below, figure 2, is the layout of the bed tower penthouse with the access space highlighted.

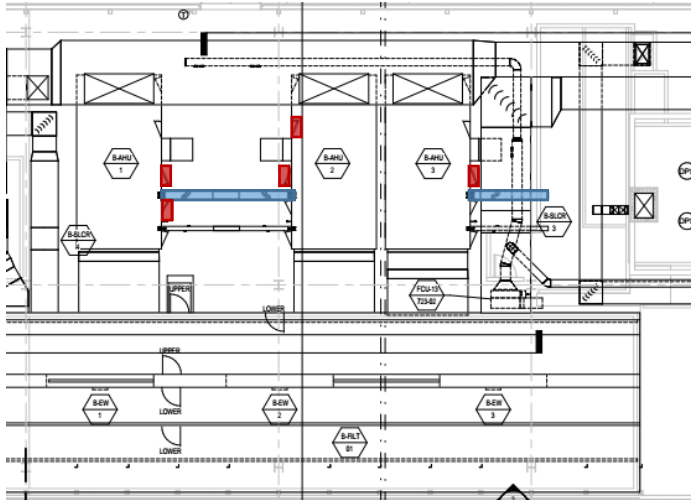


Figure 2 Bed Tower Penthouse Layout

5.12 Humidifiers and water-spray systems

The steam humidifiers use potable water as specified in 5.12.1, and contain no chemical additives other than the standard ones in the potable water system. There are no obstructions greater than 15 degrees downstream of the humidifiers.

5.13 Access for inspection, cleaning, and maintenance

All equipment has a clearance big enough for routine inspection and maintenance as specified in 5.13.1. The IBS floors allow terminal units to be easily accessible for regular maintenance by a person with a wheeled cart by means of aisles highlighted in figure 3 below. Controllers and sensors are easily accessible to both the occupants of the medical center as well as for maintenance. Every air handler has multiple access doors in order to maintain different components of the air handler. Some air handlers share access space with another air handler shown in figure 2 above.

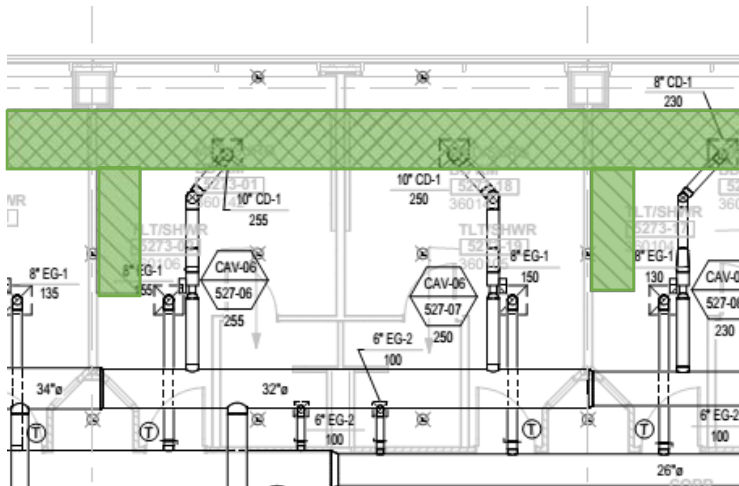


Figure 3 Level 5 IBS Floor Accessible Aisles

5.14 Building Envelope

The building envelope has a weather barrier in the roof construction with the liquid applied water barrier, as well as a water barrier layer in the wall construction. All joints within the construction of the envelope are treated in order to break the pathway for air leakage. All pipes and ducts expected to reach low temperatures are insulated in order to prevent condensation from forming as mentioned in 5.14.2.

5.15 Buildings with Attached Parking Garages

The army medical center does not have a parking garage attached to it, so section 5.15 does not apply to the building.

5.16 Air Classification and Recirculation

The bed tower of the medical center has mainly patient rooms as well as office space. The offices on the 6th floor can be classified as either Class 1 or 2. This air can be recirculated within the office space it originally circulated in. The patient rooms are class 3, can be recirculated within the space of origin, but it cannot be transferred to other spaces. Accidental recirculation from exhaust leaking into the supply side of the enthalpy wheel is allowed.

5.17 Requirements for Buildings Containing ETS Areas and ETS-Free Areas

There are no Environmental tobacco smoke areas in the army medical center, so section 5.17 does not apply to the building.

ASHRAE 62.1 Section 6: Procedures

6.2 Ventilation Rate Procedure

The breathing zone air flows are calculated using ventilation rate procedure using equation 6.2.2.1:

$$V_{bz} = R_p \times P_z + R_a \times A_z$$

The values for people outdoor air rate per person (R_p), area outdoor air rate per square foot (R_a) are found in table 6.2.2.1. Both R_p and R_a are multiplied by the number of people in the ventilation zone (P_z) and the area of the zone (A_z) respectively. The equation calculates V_{bz} which is the breathing zone outdoor airflow. The minimum outdoor air changes for medical rooms are found in table 7.1 of ASHRAE 170. The outdoor air flow is found by multiplying the air change per hour by the volume of the room divided by 60 to convert to cfm. Appendix B has the ventilation air flow calculations for all spaces in levels 5 and 6.

The outdoor air flow that must be provided to the zone by the air distribution system (V_{oz}) is determined by the equation 6.2.2.3:

$$V_{oz} = V_{bz}/E_z$$

E_z is the zone air distribution effectiveness that is determined by table 6.2.2.2. Since the air distribution is ceiling supply of cold air and a ceiling exhaust, since it is 100% outside air, the E_z for both air handlers is 1.0. The required breathing zone air flow is the same as the zone outside air flow.

According to 6.2.4, 100% outdoor air systems have a outdoor air intake flow (V_{ot}) using the equation 6.2.4:

$$V_{ot} = \sum_{\text{all zones}} V_{oz}$$

System	Breathing Zone Air Flow (V_{bz})	Zone Air Distribution Effectiveness (E_z)	Outdoor Air Intake Flow (V_{ot})
AHU-2: Floor 5 Surgery	7160	1.0	7160
AHU-3: Floor 6 Admin	13894	1.0	13894

Table 2 Breathing Zone Air Flows

Section 6.2.5 multiple-zone recirculating systems does not apply to the army medical center because it is a 100% outside air system, thus has no return air. Critical Z values or primary outdoor air fraction values do not apply to the building.

6.5 Exhaust Ventilation

The exhaust airflows were calculated using Table 6-4 which include the required exhaust air rates to maintain clean air and proper ventilation. ASHRAE 170 table 7.1 states whether or not a space must be exhausted. If it has to be exhausted, then the entire supply outside air cfm must be exhausted. Most of the spaces on level 5 are exhausted, but only the storage rooms and restrooms must be exhausted on level 6. The exhaust calculations are found in Appendix B, along with the ventilation calculations.

Section 6 Summary

The table of ventilation calculations for each room is found in Appendix B. ASHRAE 170-2013 and ASHRAE 62.1-2013 were used for minimum outside air rates for various spaces. The two air handlers for floors 5 and 6 were analyzed, AHU-2 for level 5 and AHU-3 for level 6. AHU-2 ventilation calculations were made using mainly ASHRAE 170 because of the strict medical program of surgical and isolation rooms. AHU-3 calculations were made using strictly ASHRAE 62.1 because of the attention on office spaces and lack of procedure rooms.

All of the design values for both systems exceed the calculated values significantly. The design values were calculated using UFC-4-510 the design guide for United Facilities Criteria for Military Medical Facilities by the Department of Defense. The UFC guidelines are more stringent than both ASHRAE 62.1 and ASHRAE 170 ventilation rates. For AHU-2, some values were taken from ASHRAE 62.1 for offices and break rooms, however, UFC has more specific ventilation rates than ASHRAE.

Compliance with ASHRAE 90.1

5.1.4 Climate

Carl R. Darnall medical center is located in Fort Hood, Texas. Fort Hood falls in Bell County in Texas, it is in Zone 2A.

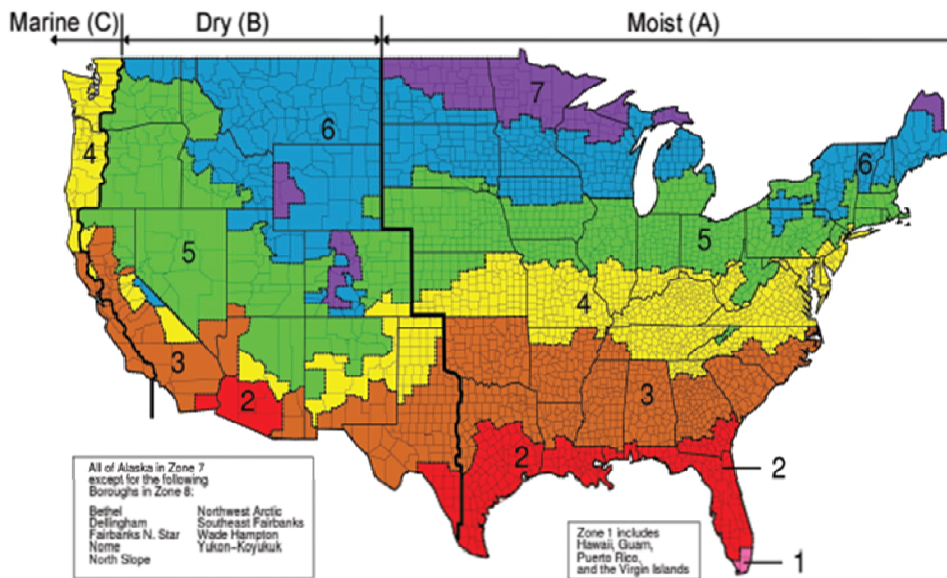


Figure B1-1 U.S. climate zone map (ASHRAE Transactions, Briggs et al., 2003).

Figure 4 B1-1 U.S. Climate Zone Map

5.2 Compliance Paths

Section 5.2 states according to each zone, the building must comply with certain insulation values as well as fenestration percentage less than 40%. Overall, the medical center has a fenestration percentage of 23.9% which passes the standard significantly. The bed tower, more specifically, floors 5-6 have a fenestration percentage of 28.9% which also complies with the standard.

5.5 Prescriptive Building Envelope Option

ASHRAE 90.1 section 5.5 states a non-residential building must comply with the set building construction standards for each climate zone. Below, in table 3, the medical center's building construction U-values are compared with Table 5.5-2 which can be seen in Appendix A. The building construction of floors 5-6 of the medical center complies with ASHRAE 90.1 Building Envelope.

Building Construction Comparison			
	Actual U-Value (Btu/h*ft ² *F)	ASHRAE U-Value (Btu/h*ft ² *F)	Does it Comply?
Wall	0.0526	0.151	Yes
Roof	0.0321	0.039	Yes
Window	0.42	0.57	Yes

Table 3 Building Construction Comparison

Section 6: Heating, Ventilating, and Air Conditioning

6.4 Mandatory Provisions

All of the mechanical equipment in the army medical center meet the minimum equipment efficiencies presented in tables 6.8.1-1 through 6.8.1-13 of ASHRAE 90.1. Load calculations were performed in accordance with ANSI/ASHRAE/ACCA Standard 183 in order to size the systems and equipment.

6.5 Prescriptive Path

The army medical center is designed as a 100% dedicated outdoor air system, therefore, under favorable conditions, the building will receive free cooling through this air side economizer. Simultaneous heating and cooling may not occur in zones, zone controls will limit terminal units from wasting energy through recooling or reheating the air. The some of the CAV terminal units in the medical center can heat the incoming cold supply air down to the proper temperature for that zone.

Section 7: Service Water Heating

All water heating equipment in the medical center have an efficiency that surpasses the minimum performance requirements presented in table 7.8. The piping insulation for the heated hot water system meets the insulation conductivity listed in Table 6.8.3-1 for the operating temperature range of 105°F-140°F. There are temperature maintenance controls on the heated hot water equipment in order to regulate temperature.

Section 8: Power

The army medical center uses both the Unified Facilities Criteria and the National Electrical Code 2008 for its power standards. Level 6 consists of mainly receptacles for office equipment and lights, however, level 5 has patient bed interfaces, nurse call cable, as well as equipment power.

Section 9: Lighting

The army medical center must comply with section 9 which includes the lighting power density. Since the building is healthcare, each space varies by activity the type of medical attention being performed in each room. More light is need for a surgery room than an office. Therefore, lighting power density was calculated separately for level 5 and 6, using both the building area method, and the space by space method. The lighting power density according to building area method for level 5 would be 1.05 W/sf² because the building is a hospital. The space by space method was applied to level 6 because of the focus of offices using table 9.6.1. The lighting power density calculations for level 6 are shown in Appendix C. The lighting controls and fixtures for both floors vary as well. Both levels have recessed lighting, but the fixtures on level 5 have a higher luminous flux in the procedure rooms. Occupancy sensors are used on level 6 in the offices to save energy, but not on level 5 due to high activity.

Appendix A

90.1 5.5-1 Table: Building Envelope Requirements

Tables 6.1

Appendix B

Ventilation Calculations for AHU-2 and AHU-3

Exhaust Calculations for all spaces

Appendix C

Lighting Power Density for Level 6

Appendix A

Table 5.5-2 Building Envelope Requirements for Climate Zone 2 (A,B)*

Opaque Elements	Nonresidential		Residential		Semiheated				
	Assembly Maximum	Insulation Min. R-Value	Assembly Maximum	Insulation Min. R-Value	Assembly Maximum	Insulation Min. R-Value			
<i>Roofs</i>									
Insulation Entirely above Deck	U-0.039	R-25 c.i.	U-0.039	R-25 c.i.	U-0.173	R-5 c.i.			
Metal Building ^a	U-0.041	R-10 + R-19 FC	U-0.041	R-10 + R-19 FC	U-0.096	R-16			
Attic and Other	U-0.027	R-38	U-0.027	R-38	U-0.053	R-19			
<i>Walls, above Grade</i>									
Mass	U-0.151 ^b	R-5.7 c.i. ^b	U-0.123	R-7.6 c.i.	U-0.580	NR			
Metal Building	U-0.094	R-0 + R-9.8 c.i.	U-0.094	R-0 + R-9.8 c.i.	U-0.162	R-13			
Steel Framed	U-0.084	R-13 + R-3.8 c.i.	U-0.064	R-13 + R-7.5 c.i.	U-0.124	R-13			
Wood Framed and Other	U-0.089	R-13	U-0.089	R-13	U-0.089	R-13			
<i>Wall, below Grade</i>									
Below Grade Wall	C-1.140	NR	C-1.140	NR	C-1.140	NR			
<i>Floors</i>									
Mass	U-0.107	R-6.3 c.i.	U-0.087	R-8.3 c.i.	U-0.322	NR			
Steel Joist	U-0.038	R-30	U-0.038	R-30	U-0.069	R-13			
Wood Framed and Other	U-0.033	R-30	U-0.033	R-30	U-0.066	R-13			
<i>Slab-on-Grade Floors</i>									
Unheated	F-0.730	NR	F-0.730	NR	F-0.730	NR			
Heated	F-0.900	R-10 for 24 in.	F-0.860	R-15 for 24 in.	F-1.020	R-7.5 for 12 in.			
<i>Opaque Doors</i>									
Swinging	U-0.700		U-0.500		U-0.700				
Nonswinging	U-0.500		U-0.500		U-1.450				
Fenestration	Assembly Max. U	Assembly Max. SHGC	Assembly Min. VT/SHGC	Assembly Max. U	Assembly Max. SHGC	Assembly Min. VT/SHGC	Assembly Max. U	Assembly Max. SHGC	Assembly Min. VT/SHGC
	(for all frame types)			(for all frame types)			(for all frame types)		
<i>Vertical Fenestration, 0%–40% of Wall</i>									
Nonmetal framing, all	U-0.40			U-0.40			U-0.93		
Metal framing, fixed	U-0.57			U-0.57			U-1.20		
Metal framing, operable	U-0.65	SHGC-0.25	1.10	U-0.65	SHGC-0.25	1.10	U-1.20	NR	NR
Metal framing, entrance door	U-0.83			U-0.77			U-0.83		
<i>Skylight, 0%–3% of Roof</i>									
All types	U-0.65	SHGC-0.35	NR	U-0.65	SHGC-0.35	NR	U-1.80	NR	NR

* The following definitions apply: c.i. = continuous insulation (see Section 3.2), FC = filled cavity (see Section A2.3.2.5), Ls = liner system (see Section A2.3.2.4), NR = no (insulation) requirement.
a. When using the R-value compliance method for metal building roofs, a thermal spacer block is required (see Section A2.3.2).
b. Exception to Section 5.5.3.2 applies for mass walls above grade.

Table 4 5.5-2 Building Envelope Requirements

**TABLE 9.5.1 Lighting Power Densities
Using the Building Area Method**

Building Area Type ^a	LPD, W/m ²
Automotive facility	0.80
Convention center	1.01
Courthouse	1.01
Dining: Bar lounge/leisure	1.01
Dining: Cafeteria/fast food	0.90
Dining: Family	0.95
Dormitory	0.57
Exercise center	0.84
Fire station	0.671
Gymnasium	0.94
Health-care clinic	0.90
Hospital	1.05
Hotel/Motel	0.87
Library	1.19
Manufacturing facility	1.17
Motion picture theater	0.76
Multifamily	0.51
Museum	1.02
Office	0.82
Parking garage	0.21
Penitentiary	0.81
Performing arts theater	1.39
Police station	0.87
Post office	0.87
Religious building	1.00
Retail	1.26
School/university	0.87
Sports arena	0.91
Town hall	0.89
Transportation	0.70
Warehouse	0.66
Workshop	1.19

a. In cases where both a general building area type and a specific building area type are listed, the specific building area type shall apply.

Appendix B

Ventilation Schedule AHU-2

Room Number	Room	System	Area	Floor to Ceiling	Volume	Occupancy Density	Space Type - ASHRAE 170-2013	Minimum Air Changes per Hour			Minimum OA	Supply OA	Space Type (ASHRAE 62.1)	Minimum Ventilation Rate		Minimum	Exhaust	Minimum Ventilation OA	Design Minimum OA (100% DOAS)
			Ft ²	Ft	Ft ³	# People		OA (ach)	Supply (ach)	Exhaust	CFM	CFM		CFM/Person	CFM/SF	CFM	CFM	CFM	CFM
5171-01	Isolation Bed	B-AHU-2	364	9	3276	3	All Room	2	12	Yes	109	655					655	109	350
5171-02	Toilet/Shower	B-AHU-2	64	9	576	0	Toilet Room	NR	10	Yes	0	96					96	0	-
5171-03	Isolation ANTE Room	B-AHU-2	203	9	1827	0	Toilet Room	NR	10	Yes	0	305					305	0	260
5171-04	Isolation Bed	B-AHU-2	365	9	3285	3	All Room	2	12	Yes	110	657					657	110	250
5171-05	Toilet/Shower	B-AHU-2	64	9	576	0	Toilet Room	NR	10	Yes	0	96					96	0	-
5171-06	Pediatric Medical / Surgery Bed	B-AHU-2	329	9	2961	3	Procedure Room (Class A Surgery)	3	15	NR	148	740					0	148	180
5171-07	Toilet/Shower	B-AHU-2	64	9	576	0	Toilet Room	NR	10	Yes	0	96					96	0	215
5171-C01	Corridor	B-AHU-2	292	8.5	2482	0	Toilet Room	NR	10	Yes	0	414					414	0	85
5172-01	Pediatric Medical / Surgery Bed RM	B-AHU-2	359	9	3231	3	Procedure Room (Class A Surgery)	3	15	NR	162	808					0	162	250
5172-02	Toilet/Shower	B-AHU-2	64	9	576	0	Toilet Room	NR	10	Yes	0	96					96	0	-
5172-04	Toilet/Shower	B-AHU-2	64	9	576	0	Toilet Room	NR	10	Yes	0	96					96	0	-
5172-05	Pediatric Medical / Surgery Bed RM	B-AHU-2	326	9	2934	3	Procedure Room (Class A Surgery)	3	15	NR	147	734					0	147	260
5173-01	Pediatric Medical / Surgery Bed	B-AHU-2	329	9	2961	3	Procedure Room (Class A Surgery)	3	15	NR	148	740					0	148	255
5173-02	Nurse Sub-Team Center	B-AHU-2	96	8	768	1	Patient Corridor	NR	2	NR	0	26					0	0	90
5173-03	Medical Prep	B-AHU-2	108	8	864	0	Clean Workroom	2	4	NR	29	58					0	29	140
5173-04	TREATMENT	B-AHU-2	176	9	1584	3	Treatment Room	2	6	NR	53	158					0	53	160
5173-05	Electrical	B-AHU-2	178	10	1780	0							Electrical	0	0.06	11		11	0
5173-06	Communication	B-AHU-2	131	10	1310	0							Telecom	0	0.06	8		8	40
5173-07	Clean Utility	B-AHU-2	132	8	1056	0	Clean Linen Storage	NR	2	NR	0	35					0	0	75
5173-08	Playroom	B-AHU-2	138	9	1242	5							Daycare sickroom	10	0.18	75		75	120
5173-09	Vending Area	B-AHU-2	26	8	208	0							Breakroom	5	0.12	3		3	0
5173-10	Family Waiting	B-AHU-2	212	9	1908	5	ER Waiting Room	2	12	Yes	64	382					382	64	190
5173-11	NOUR Center	B-AHU-2	83	8	664	0	Food Prep	2	10	NR	22	111					0	22	375
5173-12	Office	B-AHU-2	89	8	712	2							Office Space	5	0.06	15		15	95
5173-13	Office	B-AHU-2	91	8	728	2							Office Space	5	0.06	15		15	145
5173-14	Office	B-AHU-2	120	8	960	2							Office Space	5	0.06	17		17	135
5173-15	Staff Toilet	B-AHU-2	69	8	552	0	Bathroom	NR	10	Yes	0	92					92	0	-
5173-16	CC	B-AHU-2	16	8	128	0							Storage	0	0.12	2		2	10
5173-17	Pediatric Medical / Surgery Bed	B-AHU-2	329	9	2961	3	Procedure Room (Class A Surgery)	3	15	NR	148	740					0	148	255
5173-18	Toilet/Shower	B-AHU-2	64	9	576	0	Toilet Room	NR	10	Yes	0	96					96	0	-
5173-19	Toilet/Shower	B-AHU-2	64	9	576	0	Toilet Room	NR	10	Yes	0	96					96	0	-
5173-C01	Corridor	B-AHU-2	756	8.5	6426	0	Patient Corridor	NR	2	NR	0	214					0	0	215
5173-C02	Corridor	B-AHU-2	207	8.5	1759.5	0	Patient Corridor	NR	2	NR	0	59					0	0	60
5173-C03	Corridor	B-AHU-2	115	8.5	977.5	0	Patient Corridor	NR	2	NR	0	33					0	0	80
5174-01	Clinician Chart/Workroom	B-AHU-2	120	8	960	2							Office Space	5	0.06	17		17	100
5174-02	Nurse Workroom	B-AHU-2	100	8	800	2							Office Space	5	0.06	16		16	135
5174-03	Nurse Team Center	B-AHU-2	90	8	720	2	Patient Corridor	NR	2	NR	0	24					0	0	220
5174-04	Remote Monitor Station	B-AHU-2	57	8	456	1	Patient Corridor	NR	2	NR	0	15					0	0	195
5174-05	Lab/SAT Poct	B-AHU-2	20	8	160	0	Patient Corridor	NR	2	NR	0	5					0	0	60
5174-06	Toilet/Shower	B-AHU-2	64	8	512	0	Toilet Room	NR	10	Yes	0	85					85	0	-
5174-07	Pediatric Medical	B-AHU-2	332	8	2656	3	Procedure Room (Class A Surgery)	3	15	NR	133	664					0	133	330
5174-08	Toilet/Shower	B-AHU-2	64	8	512	0	Toilet Room	NR	10	Yes	0	85					85	0	-
5174-09	Pediatric Medical / Surgery Bed	B-AHU-2	332	8	2656	3	Procedure Room (Class A Surgery)	3	15	NR	133	664					0	133	330
5174-10	Pediatric Medical / Surgery Bedroom	B-AHU-2	332	8	2656	3	Procedure Room (Class A Surgery)	3	15	NR	133	664					0	133	350
5174-11	Toilet/Shower	B-AHU-2	64	8	512	0	Toilet Room	NR	10	Yes	0	85					85	0	-
5174-12	Toilet/Sink	B-AHU-2	64	8	512	0	Toilet Room	NR	10	Yes	0	85					85	0	-
5174-13	Medical / Surgery Bed	B-AHU-2	332	8	2656	3	Procedure Room (Class A Surgery)	3	15	NR	133	664					0	133	350
5174-14	Electrical	B-AHU-2	185	10	1850	0							Electrical	0	0.06	11		11	0
5174-15	MOBILE X-RAY	B-AHU-2	38	8	304	0	Patient Corridor	NR	2	NR	0	10					0	0	25
5174-16	Soiled Utility	B-AHU-2	127	8	1016	0	Soiled	2	6	Yes	34	102					102	34	0
5174-17	Pediatric Equipment	B-AHU-2	139	9	1251	0	Clean Workroom	2	4	NR	42	83					0	42	85

5174-C01	Corridor	B-AHU-2	721	8.5	6128.5	0	Patient Corridor	NR	2	NR	0	204					0	0	205
5231-01	Elevator Vestibule	B-AHU-2	302	8.5	2567	0	Patient Corridor	NR	2	NR	0	86					0	0	275
5231-02	Janitor	B-AHU-2	58	8	464	0	Janitor's Closet	NR	10	Yes	0	77					77	0	0
5231-03	Reception / Control	B-AHU-2	184	8	1472	2	Patient Corridor	NR	2	NR	0	49					0	0	175
5231-04	Clean Supply	B-AHU-2	88	8	704	0	Clean Linen Storage	NR	2	NR	0	23					0	0	45
5231-05	Litter / WC Storage	B-AHU-2	65	8	520	0	Clean Workroom	2	4	NR	17	35					0	17	30
5231-06	Social Workers	B-AHU-2	111	8	888	2							Office Space	5	0.06	17		17	140
5231-07	On-Call / Sleep	B-AHU-2	107	8	856	1	Resident room	2	2	NR	29	29					0	29	150
5231-08	Consulting	B-AHU-2	114	8	912	2							Office Space	5	0.06	17		17	95
5231-09	Equipment Storage	B-AHU-2	107	9	963	0	Clean Workroom	2	4	NR	32	64					0	32	65
5231-10	Public Toilet	B-AHU-2	64	8.5	544	0	Bathroom	NR	10	Yes	0	91					91	0	40
5231-11	Public Toilet	B-AHU-2	64	8.5	544	0	Bathroom	NR	10	Yes	0	91					91	0	40
5231-C01	Corridor	B-AHU-2	1564	8.5	13294	0	Patient Corridor	NR	2	NR	0	443					0	0	1275
5231-C02	Corridor	B-AHU-2		8.5	0	0	Patient Corridor	NR	2	NR	0	0					0	0	
5231-C03	Corridor	B-AHU-2	285	8.5	2422.5	0	Patient Corridor	NR	2	NR	0	81					0	0	85
5232-01	Staff Lounge	B-AHU-2	155	8	1240		Resident gathering/activity	4	4	NR	83	83					0	83	235
5232-02	Personal Property Lockers	B-AHU-2	47	8	376		Resident gathering/activity	4	4	NR	25	25					0	25	25
5232-03	Equipment Storage	B-AHU-2	135	8.5	1147.5		Clean Workroom	2	4	NR	38	77					0	38	85
5232-04	Medical / Surgery Bed	B-AHU-2	326	9	2934		Procedure Room (Class A Surgery)	3	15	NR	147	734					0	147	330
5232-05	Toilet / Shower	B-AHU-2	64	9	576	0	Toilet Room	NR	10	Yes	0	96					96	0	-
5232-06	Medical / Surgery Bed	B-AHU-2	326	9	2934	3	Procedure Room (Class A Surgery)	3	15	NR	147	734					0	147	350
5232-07	Toilet / Shower	B-AHU-2	64	9	576	0	Toilet Room	NR	10	Yes	0	96					96	0	-
5232-08	Medical / Surgery Bed	B-AHU-2	332	9	2988	3	Procedure Room (Class A Surgery)	3	15	NR	149	747					0	149	330
5232-09	Medical / Surgery Bed	B-AHU-2	332	9	2988	3	Procedure Room (Class A Surgery)	3	15	NR	149	747					0	149	330
5232-10	Toilet / Shower	B-AHU-2	64	9	576	0	Toilet Room	NR	10	Yes	0	96					96	0	-
5232-11	Toilet / Shower	B-AHU-2	64	9	576	0	Toilet Room	NR	10	Yes	0	96					96	0	-
5232-12	Litter / Wheelchair Storage	B-AHU-2	62	8	496	0	Clean Workroom	2	4	NR	17	33					0	17	35
5232-13	CC	B-AHU-2	35	8	280	0							Storage	0	0.12	4		4	20
5232-14	Nurse Sub-Team Center	B-AHU-2	98	8	784	1	Patient Corridor	NR	2	NR	0	26					0	0	155
5232-15	On-Call / Toilet / Shower	B-AHU-2	82	8	656	0	Resident room	2	2	NR	22	22					0	22	0
5232-16	Staff Toilet	B-AHU-2	53	8	424	0	Bathroom	NR	10	Yes	0	71					71	0	-
5232-17	Clinical Pharmacist	B-AHU-2	115	8	920	1							Office Space	5	0.06	12		12	100
5232-C01	Corridor	B-AHU-2	434	8.5	3689	0	Patient Corridor	NR	2	NR	0	123					0	0	125
5232-C02	Corridor	B-AHU-2	1531	8.5	13013.5	0	Patient Corridor	NR	2	NR	0	434					0	0	745
5232-C03	Corridor	B-AHU-2	295	8.5	2507.5	0	Patient Corridor	NR	2	NR	0	84					0	0	85
5233-02	Trash Linen Collect	B-AHU-2	160	8	1280	0	Soiled Linen Sorting and Storage	NR	10	Yes	0	213					213	0	60
5233-03	Electrical	B-AHU-2	230	10	2300	0							Electrical	0	0.06	14		14	0
5233-04	Electrical	B-AHU-2	115	10	1150	0							Electrical	0	0.06	7		7	0
5233-05	Family Toilet	B-AHU-2	64	8	512	0	Bathroom	NR	10	Yes	0	85					85	0	-
5233-06	Conference	B-AHU-2	326	9	2934	8							Conference					0	315
5233-07	Vending Area	B-AHU-2	64	9	576	0							Breakroom	5	0.12	8		8	0
5233-08	Family Waiting	B-AHU-2	286	9	2574	9	ER Waiting Room	2	12		86	515					0	86	415
5233-09	Personal Property Lockers	B-AHU-2	95	8	760	0	Resident gathering/activity	4	4	NR	51	51					0	51	55
5234-01	Toilet / Shower	B-AHU-2	64	9	576	0	Toilet Room	NR	10	Yes	0	96					96	0	-
5234-02	Medical / Surgery Bed	B-AHU-2	332	9	2988	3	Procedure Room (Class A Surgery)	3	15	NR	149	747					0	149	350
5234-03	Medical / Surgery Bed	B-AHU-2	332	9	2988	3	Procedure Room (Class A Surgery)	3	15	NR	149	747					0	149	330
5234-04	Toilet / Shower	B-AHU-2	64	9	576	0	Toilet Room	NR	10	Yes	0	96					96	0	-
5234-05	Medical / Surgery Bed	B-AHU-2	332	9	2988	3	Procedure Room (Class A Surgery)	3	15	NR	149	747					0	149	350
5234-06	Toilet / Shower	B-AHU-2	64	9	576	0	Toilet Room	NR	10	Yes	0	96					96	0	-
5234-07	Toilet / Shower	B-AHU-2	64	9	576	0	Toilet Room	NR	10	Yes	0	96					96	0	-
5234-08	Medical / Surgery Bed	B-AHU-2	332	9	2988	3	Procedure Room (Class A Surgery)	3	15	NR	149	747					0	149	350
5234-09	Janitor	B-AHU-2	46	9	414	0	Janitor's Closet	NR	10	Yes	0	69					69	0	-
5234-10	AGV Staging	B-AHU-2	278	8	2224	0	Patient Corridor	NR	2	NR	0	74					0	0	140
5234-11	Elevator Vestibule	B-AHU-2	257	8.5	2184.5	0	Patient Corridor	NR	2	NR	0	73					0	0	235
5234-12	Mobile X-RAY	B-AHU-2	53	8	424	0	Patient Corridor	NR	2	NR	0	14					0	0	25

5234-13	Alcove	B-AHU-2	44	8	352	0	Patient Corridor	NR	2	NR	0	12					0	0	25
5271-01	Medical / Surgery Bed	B-AHU-2	328	9	2952	3	Procedure Room (Class A Surgery)	3	15	NR	148	738					0	148	255
5271-02	Toilet / Shower	B-AHU-2	64	9	576	0	Toilet Room	NR	10	Yes	0	96					96	0	-
5271-04	On-Call / Toilet / Shower	B-AHU-2	82	8	656	0	Resident room	2	2	NR	22	22					0	22	40
5271-05	Shower / Tub	B-AHU-2	91	9	819	0	Resident room	2	2	NR	27	27					0	27	40
5271-06	Electrical	B-AHU-2	186	10	1860	0							Electrical	0	0.06	11		11	0
5271-07	Charting Workroom	B-AHU-2	139	8	1112	2							Office Space	5	0.06	18		18	175
5271-08	Physician Chart / DCT	B-AHU-2	81	8	648	2							Office Space	5	0.06	15		15	95
5271-09	Lab/SAT Poct	B-AHU-2	20	8	160	0	Patient Corridor	NR	2	NR	0	5					0	0	90
5271-10	Nurse Team Center	B-AHU-2	114	8	912	2	Patient Corridor	NR	2	NR	0	30					0	0	265
5271-11	Toilet / Shower	B-AHU-2	64	9	576	0	Toilet Room	NR	10	Yes	0	96					96	0	-
5271-12	Medical / Surgery Bed	B-AHU-2	328	9	2952	3	Procedure Room (Class A Surgery)	3	15	NR	148	738					0	148	230
5271-13	Medical / Surgery Bed	B-AHU-2	328	9	2952	3	Procedure Room (Class A Surgery)	3	15	NR	148	738					0	148	250
5271-14	Toilet / Shower	B-AHU-2	64	9	576	0	Toilet Room	NR	10	Yes	0	96					96	0	-
5271-15	Medical / Surgery Bed	B-AHU-2	328	9	2952	3	Procedure Room (Class A Surgery)	3	15	NR	148	738					0	148	230
5271-16	Toilet / Shower	B-AHU-2	64	9	576	0	Toilet Room	NR	10	Yes	0	96					96	0	-
5271-C01	Corridor	B-AHU-2	290	8.5	2465	0	Patient Corridor	NR	2	NR	0	82					0	0	85
5272-01	Toilet / Shower	B-AHU-2	64	9	576	0	Toilet Room	NR	10	Yes	0	96					96	0	-
5272-02	Medical / Surgery Bed	B-AHU-2	332	9	2988	3	Procedure Room (Class A Surgery)	3	15	NR	149	747					0	149	330
5272-03	Medical / Surgery Bed	B-AHU-2	332	9	2988	3	Procedure Room (Class A Surgery)	3	15	NR	149	747					0	149	350
5272-04	Toilet / Shower	B-AHU-2	64	9	576	0	Toilet Room	NR	10	Yes	0	96					96	0	-
5272-05	Medical / Surgery Bed	B-AHU-2	326	9	2934	3	Procedure Room (Class A Surgery)	3	15	NR	147	734					0	147	325
5272-06	Toilet / Shower	B-AHU-2	64	9	576	0	Toilet Room	NR	10	Yes	0	96					96	0	-
5272-07	Toilet / Shower	B-AHU-2	64	9	576	0	Toilet Room	NR	10	Yes	0	96					96	0	-
5272-08	Medical / Surgery Bed	B-AHU-2	325	9	2925	3	Procedure Room (Class A Surgery)	3	15	NR	146	731					0	146	325
5272-09	Nurse Team Center	B-AHU-2	123	8	984	3	Patient Corridor	NR	2	NR	0	33					0	0	170
5272-10	COMM	B-AHU-2	130	10	1300	0							Telecom	0	0.06	8		8	40
5272-11	On-Call / Sleep	B-AHU-2	145	8	1160	1	Resident room	2	2	NR	39	39					0	39	150
5272-12	CC	B-AHU-2	21	8	168	0							Storage	0	0.12	3		3	15
5272-C01	Corridor	B-AHU-2	943	8.5	8015.5	0	Patient Corridor	NR	2	NR	0	267					0	0	155
5273-01	Medical / Surgery Bed	B-AHU-2	329	9	2961	3	Procedure Room (Class A Surgery)	3	15	NR	148	740					0	148	255
5273-02	Toilet / Shower	B-AHU-2	64	9	576	0	Toilet Room	NR	10	Yes	0	96					96	0	-
5273-03	Medical Prep	B-AHU-2	111	8	888	0	Substerile service area	2	6	NR	30	89					0	30	140
5273-04	Janitor	B-AHU-2	41	8	328	0	Janitor's Closet	NR	10	Yes	0	55					55	0	-
5273-05	Clean Supply	B-AHU-2	73	8	584	0	Clean Linen Storage	NR	2	NR	0	19					0	0	40
5273-06	Equipment Storage	B-AHU-2	237	9	2133	0	Clean Workroom	2	4	NR	71	142					0	71	145
5273-07	Ortho Equipment Storage	B-AHU-2	53	9	477	0	Clean Workroom	2	4	NR	16	32					0	16	35
5273-08	Clean Utility	B-AHU-2	213	8	1704	0	Clean Linen Storage	NR	2	NR	0	57					0	0	125
5273-09	Admin Cubicle	B-AHU-2	109	8	872	2							Office Space	5	0.06	17		17	160
5273-10	NCOIC	B-AHU-2	97	8	776	2							Office Space	5	0.06	16		16	95
5273-11	Medical Surgery / ICU	B-AHU-2	109	8	872	2							Office Space	5	0.06	17		17	95
5273-12	Intensivist / Hospitalist	B-AHU-2	94	8	752	2							Office Space	5	0.06	16		16	95
5273-13	Clinical Nurse Specialist	B-AHU-2	91	8	728	2							Office Space	5	0.06	15		15	95
5273-14	Toilet / Shower	B-AHU-2	64	9	576	0	Toilet Room	NR	10	Yes	0	96					96	0	-
5273-15	Medical / Surgery Bed	B-AHU-2	332	9	2988	3	Procedure Room (Class A Surgery)	3	15	NR	149	747					0	149	230
5273-16	Medical / Surgery Bed	B-AHU-2	332	9	2988	3	Procedure Room (Class A Surgery)	3	15	NR	149	747					0	149	230
5273-17	Toilet / Shower	B-AHU-2	64	9	576	0	Toilet Room	NR	10	Yes	0	96					96	0	-
5273-18	Medical / Surgery Bed	B-AHU-2	332	9	2988	3	Procedure Room (Class A Surgery)	3	15	NR	149	747					0	149	250
5273-19	Toilet / Shower	B-AHU-2	64	9	576	0	Toilet Room	NR	10	Yes	0	96					96	0	-
5273-C01	Corridor	B-AHU-2	1098	8.5	9333	0	Patient Corridor	NR	2	NR	0	311					0	0	315
5274-01	NOUR Center	B-AHU-2	96	8	768	0	Food Prep	2	10	NR	26	128					0	26	375
5274-02	Toilet / Shower	B-AHU-2	64	9	576	0	Toilet Room	NR	10	Yes	0	96					96	0	-
5274-03	Medical / Surgery Bed	B-AHU-2	332	9	2988	3	Procedure Room (Class A Surgery)	3	15	NR	149	747					0	149	295
5274-04	Medical / Surgery Bed	B-AHU-2	332	9	2988	3	Procedure Room (Class A Surgery)	3	15	NR	149	747					0	149	295
5274-05	Toilet / Shower	B-AHU-2	64	9	576	0	Toilet Room	NR	10	Yes	0	96					96	0	-

5274-06	Bariatric Medical / Surgery Bed	B-AHU-2	330	9	2970	3	Procedure Room (Class A Surgery)	3	15	NR	149	743					0	149	350
5274-07	Toilet / Shower	B-AHU-2	64	9	576	0	Toilet Room	NR	10	Yes	0	96					96	0	-
5274-08	Toilet / Shower	B-AHU-2	64	9	576	0	Toilet Room	NR	10	Yes	0	96					96	0	-
5274-09	Bariatric Medical / Surgery Bed	B-AHU-2	330	9	2970	3	Procedure Room (Class A Surgery)	3	15	NR	149	743					0	149	350
5274-10	Nurse Sub-Team Center	B-AHU-2	85	8	680	2	Patient Corridor	NR	2	NR	0	23					0	0	170
5274-11	Staff Toilet	B-AHU-2	67	8	536	0	Bathroom	NR	10	Yes	0	89					89	0	-
5274-12	Electrical	B-AHU-2	176	10	1760	0							Electrical	0	0.06	11		11	0
5274-13	Soiled Utility	B-AHU-2	95	8	760	0	Soiled Linen Sorting and Storage	NR	10	Yes	0	127					127	0	0
5274-14	Clean Linen Cart Alcove	B-AHU-2	61	8	488	0	Clean Linen Storage	NR	2	NR	0	16					0	0	40
5274-15	Clean Linen Cart Alcove	B-AHU-2	63	8	504	0	Clean Linen Storage	NR	2	NR	0	17					0	0	35
5274-16	Soiled Utility	B-AHU-2	127	8	1016	0	Soiled	2	6	Yes	34	102					102	34	0
5274-17	Medical Gas	B-AHU-2	39	8	312	0	Medical/anesthesia gas storage	NR	8	Yes	0	42					42	0	0
5311-01	Medical / Surgery Bed	B-AHU-2	322	9	2898	3	Procedure Room (Class A Surgery)	3	15	NR	145	725					0	145	250
5311-02	Toilet / Shower	B-AHU-2	64	9	576	0	Toilet Room	NR	10	Yes	0	96					96	0	-
5311-03	Toilet / Shower	B-AHU-2	64	9	576	0	Toilet Room	NR	10	Yes	0	96					96	0	-
5311-04	Medical / Surgery Bed	B-AHU-2	374	9	3366	3	Procedure Room (Class A Surgery)	3	15	NR	168	842					0	168	235
5311-05	Elevator Vestibule	B-AHU-2	292	8.5	2482	0	Patient Corridor	NR	2	NR	0	83					0	0	840
5311-07	Staff Lounge	B-AHU-2	199	8.5	1691.5	8	Resident gathering/activity	4	4	NR	113	113					0	113	400
5311-08	Clean Utility	B-AHU-2	135	8	1080	0	Clean Linen Storage	NR	2	NR	0	36					0	0	60
5311-C01	Corridor	B-AHU-2	288	8.5	2448	0	Patient Corridor	NR	2	NR	0	82					0	0	85
5311-C02	Corridor	B-AHU-2	95	8.5	807.5	0	Patient Corridor	NR	2	NR	0	27					0	0	40
5312-01	Toilet / Shower	B-AHU-2	64	9	576	0	Toilet Room	NR	10	Yes	0	96					96	0	-
5312-02	Medical / Surgery Bed	B-AHU-2	380	9	3420	3	Procedure Room (Class A Surgery)	3	15	NR	171	855					0	171	320
5312-03	Isolation ANTE Room	B-AHU-2	74	9	666	3	AII anteroom	NR	10	Yes	0	111					111	0	105
5312-04	Isolation Bed	B-AHU-2	298	9	2682	3	AII Room	2	12	Yes	89	536					536	89	525
5312-05	Toilet / Shower	B-AHU-2	63	9	567	0	Toilet Room	NR	10	Yes	0	95					95	0	-
5312-06	Isolation ANTE Room	B-AHU-2	80	9	720	0	AII anteroom	NR	10	Yes	0	120					120	0	120
5312-07	Bariatric Isolation Bed	B-AHU-2	293	9	2637	3	AII Room	2	12	Yes	88	527					527	88	465
5312-08	Toilet / Shower	B-AHU-2	63	9	567	0	Toilet Room	NR	10	Yes	0	95					95	0	40
5312-09	Clean Supply	B-AHU-2	73	8	584	0	Clean Linen Storage	NR	2	NR	0	19					0	0	45
5312-C01	Corridor	B-AHU-2	135	8.5	1147.5	0	Patient Corridor	NR	2	NR	0	38					0	0	40

Ventilation Schedule AHU-3

Room Number	Room Name	System	Area - Az	Wall Height	Volume	Occupancy Density (Pz)	Space Type - ASHRAE 170-2013	ASHRAE People Air Rate		Exhaust Air	Calculated Minimum OA	Design Supply OA (100% DOAS)
			Ft ²	Ft	Ft ³			Rp (Per Person)	Ra (Per SqFt)	CFM	Vbz CFM	CFM
6171-01	Hospital Commander	B-AHU-3	245	8	1960	7	Office Space	5	0.06		50	350
6171-02	Toilet / Shower	B-AHU-3	66	8	528	1	Restroom			70		-
6171-03	Command Driver w/ File Storage	B-AHU-3	134	8	1072	3	Office Space	5	0.06		23	260
6171-04	Executive Officer	B-AHU-3	132	8	1056	3	Office Space	5	0.06		23	250
6171-05	Toilet / Shower	B-AHU-3	101	8	808	1	Restroom			70		-
6171-06	Kitchen	B-AHU-3	116	9	1044	1	Breakroom	5	0.12	35	19	180
6171-07	Copy	B-AHU-3	112	8	896	1	Storage	0	0.12	56	13	215
6171-08	Commander Secretary	B-AHU-3	95	8	760	3	Office Space	5	0.06		21	180
6171-09	Command Sergeant Major	B-AHU-3	182	8	1456	3	Office Space	5	0.06		26	215
6171-10	DCN Secretary	B-AHU-3	95	8	760	3	Office Space	5	0.06		21	0
6171-11	Command File	B-AHU-3	59	8	472	0	Storage	0	0.12		7	0
6171-12	Closet	B-AHU-3	20	9	180	0	Storage	0	0.12		2	0
6171-C01	Corridor	B-AHU-3	336	8.5	2856	0	Corridor	0	0.06		20	100
6172-01	Files and Storage	B-AHU-3	128	8	1024	0	Storage	0	0.12		15	225
6172-02	Command Staff Lounge	B-AHU-3	151	8	1208	4	Breakroom	5	0.12		38	355
6172-04	Paralegals	B-AHU-3	159	8	1272	3	Office Space	5	0.06		25	185
6172-05	Medical Claims	B-AHU-3	87	8	696	3	Office Space	5	0.06		20	95
6172-06	SJA (Staff Judge Advocate)	B-AHU-3	111	8	888	3	Office Space	5	0.06		22	190
6172-07	Conference	B-AHU-3	505	8.5	4292.5	26	Conference	5	0.06		160	690
6173-01	DCN	B-AHU-3	153	8	1224	3	Office Space	5	0.06		24	185
6173-02	DCCS	B-AHU-3	159	8	1272	3	Office Space	5	0.06		25	160
6173-03	Waiting Room	B-AHU-3	106	9	954	6	Reception Area	5	0.06		36	160
6173-04	Conference, Commander	B-AHU-3	376	8.5	3196	19	Office Space	5	0.06		118	365
6173-05	Electrical	B-AHU-3	141	8	1128	0	Storage	0	0.12		17	0
6173-06	COMM	B-AHU-3	157	8	1256	0	Storage	0	0.12		19	40
6173-07	Manager	B-AHU-3	77	8	616	1	Office Space	5	0.06		10	60
6173-08	Chief, MAO	B-AHU-3	126	8	1008	3	Office Space	5	0.06		23	90
6173-09	Protocol	B-AHU-3	122	8	976	3	Office Space	5	0.06		22	90
6173-10	Admin Resident	B-AHU-3	133	8	1064	3	Office Space	5	0.06		23	90
6173-11	DCN SGM	B-AHU-3	160	8	1280	3	Office Space	5	0.06		25	145
6173-12	DCOS	B-AHU-3	137	8	1096	3	Office Space	5	0.06		23	205
6173-13	DCA	B-AHU-3	154	8	1232	3	Office Space	5	0.06		24	145
6173-14	DCCS Secretary	B-AHU-3	107	8	856	3	Office Space	5	0.06		21	205
6173-15	DCA Secretary	B-AHU-3	93	8	744	3	Office Space	5	0.06		21	0
6173-16	Reception Filing	B-AHU-3	195	8	1560	3	Office Space	5	0.06		27	135
6173-C01	Corridor	B-AHU-3	145	8.5	1232.5	0	Corridor	0	0.06		9	55
6173-C02	Corridor	B-AHU-3	47	8.5	399.5	0	Corridor	0	0.06		3	0
6173-C03	Corridor	B-AHU-3	290	8.5	2465	0	Corridor	0	0.06		17	85
6173-C04	Hallway	B-AHU-3	319	8.5	2711.5	0	Corridor	0	0.06		19	95
6173-C05	Hallway	B-AHU-3	103	8.5	875.5	0	Corridor	0	0.06		6	0
6173-C06	Hallway	B-AHU-3	63	8.5	535.5	0	Corridor	0	0.06		4	0
6173-C07	Corridor	B-AHU-3	384	8.5	3264	0	Corridor	0	0.06		23	110
6174-01	Copy/File/Storage	B-AHU-3	179	8	1432	1	Office Space	5	0.06	90	16	235

6174-02	Attorney	B-AHU-3	122	8	976	3	Office Space	5	0.06		22	185
6174-03	Attorney	B-AHU-3	116	8	928	3	Office Space	5	0.06		22	140
6174-04	Paralegals	B-AHU-3	169	8	1352	3	Office Space	5	0.06		25	280
6174-05	Pub Affairs Officer	B-AHU-3	125	8	1000	3	Office Space	5	0.06		23	285
6174-06	Electronic Illustration	B-AHU-3	276	8	2208	3	Office Space	5	0.06		32	545
6174-07	DCCS SGM	B-AHU-3	102	8	816	3	Office Space	5	0.06		21	100
6174-08	Electrical	B-AHU-3	176	8	1408	0	Storage	0	0.12		21	0
6174-09	Janitor	B-AHU-3	56	8	448	0	Storage	0	0.12	56	7	-
6174-10	UPS	B-AHU-3	77	8	616	0	Storage	0	0.12		9	40
6174-11	Reception	B-AHU-3	100	9	900	2	Reception Area	5	0.06		16	125
6174-12	Waiting Room	B-AHU-3	69	9	621	4	Reception Area	5	0.06		24	80
6174-13	Copy/File/Storage	B-AHU-3	115	8	920	0	Reception Area	5	0.06	58	7	180
6174-14	Admin Cubicle	B-AHU-3	110	8	880	2	Office Space	5	0.06		17	130
6174-C01	Corridor	B-AHU-3	921	8.5	7828.5	0	Corridor	0	0.06		55	335
6174-C02	Corridor	B-AHU-3	278	8.5	2363	0	Corridor	0	0.06		17	80
6174-C03	Corridor	B-AHU-3	122	8.5	1037	0	Corridor	0	0.06		7	0
6231-01	Elevator Vestibule	B-AHU-3	273	9	2457	1	Main Entry Lobbies	5	0.06		21	250
6231-02	Janitor	B-AHU-3	58	8	464	0	Storage	0	0.12	58	7	-
6231-03	Adjutant Office	B-AHU-3	113	8	904	3	Office Space	5	0.06		22	90
6231-04	Female Toilet	B-AHU-3	243	8	1944	4	Restroom			280		90
6231-05	Male Toilet	B-AHU-3	251	8	2008	4	Restroom			280		90
6231-06	Conference	B-AHU-3	274	8.5	2329	14	Conference	5	0.06		86	295
6231-07	Conference	B-AHU-3	180	8.5	1530	6	Conference	5	0.06		41	175
6231-08	Command Support	B-AHU-3	120	8	960	3	Office Space	5	0.06		22	90
6231-C01	Corridor	B-AHU-3	1438	8.5	12223	0	Corridor	0	0.06		86	1430
6231-C02	Corridor	B-AHU-3	215	8.5	1827.5	0	Corridor	0	0.06		13	65
6232-01	Adjutant Office	B-AHU-3	111	8	888	3	Office Space	5	0.06		22	100
6232-02	Adjutant Office	B-AHU-3	110	8	880	3	Office Space	5	0.06		22	100
6232-03	Copy	B-AHU-3	108	8	864	1	Office Space	5	0.06	54	11	180
6232-04	Chaplain Assistant	B-AHU-3	119	8	952	3	Office Space	5	0.06		22	145
6232-05	Chaplain Office	B-AHU-3	112	8	896	3	Office Space	5	0.06		22	195
6232-06	Chaplain Office	B-AHU-3	117	8	936	3	Office Space	5	0.06		22	230
6232-07	Chaplain Office	B-AHU-3	128	8	1024	3	Office Space	5	0.06		23	245
6232-08	Chaplain Office	B-AHU-3	111	8	888	3	Office Space	5	0.06		22	225
6232-09	Librarian Office	B-AHU-3	119	8	952	3	Office Space	5	0.06		22	220
6232-10	PC Workstation	B-AHU-3	144	10	1440	8	Science Libraries	10	5		800	350
6232-11	Circulation Reference	B-AHU-3	99	10	990	2	Science Libraries	10	5		515	165
6232-12	Book Cart / Assembly	B-AHU-3	118	10	1180	2	Science Libraries	10	5		610	0
6232-13	Conference	B-AHU-3	271	8.5	2303.5	14	Conference	5	0.06		86	295
6232-14	Conference / Interview	B-AHU-3	274	8.5	2329	14	Conference	5	0.06		86	295
6232-15	Conference	B-AHU-3	271	8.5	2303.5	14	Conference	5	0.06		86	300
6232-16	Secretary w/ Visitor	B-AHU-3	143	8	1144	4	Office Space	5	0.06		29	190
6232-17	Library Staff Workroom	B-AHU-3	120	8	960	2	Office Space	5	0.06		17	100
6232-18	Copy	B-AHU-3	71	8	568	1	Office Space	5	0.06	36	9	175
6232-C01	Corridor	B-AHU-3	1016	8.5	8636	0	Corridor	0	0.06		61	630
6232-C02	Corridor	B-AHU-3	137	8.5	1164.5	0	Corridor	0	0.06		8	0
6232-C03	Hallway	B-AHU-3	137	8.5	1164.5	0	Corridor	0	0.06		8	0

6233-02	Pneumatic Chute	B-AHU-3	171	8	1368	0	Mechanical						50
6233-03	Electrical	B-AHU-3	188	8	1504	0	Electrical						0
6233-04	Electrical	B-AHU-3	153	8	1224	0	Electrical						0
6233-05	Vending Area	B-AHU-3	171	8.5	1453.5	0	Reception Area	5	0.06		10		550
6233-06	Vending Area	B-AHU-3	498	8.5	4233	0	Reception Area	5	0.06		30		550
6234-01	Elevator Vestibule	B-AHU-3	257	9	2313	1	Main Entry Lobbies	5	0.06		20		235
6234-02	Periodical Area	B-AHU-3	120	8	960	0	Science Libraries	10	5		600		140
6234-03	Reading Area	B-AHU-3	244	8	1952	4	Science Libraries	10	5		1260		350
6234-04	Reference Holdings	B-AHU-3	359	8	2872	0	Science Libraries	10	5		1795		210
6234-05	Book Stack Area	B-AHU-3	408	8	3264	0	Science Libraries	10	5		2040		590
6234-06	Patient Advocate	B-AHU-3	242	8	1936	4	Office Space	5	0.06		35		260
6234-07	Patient Advocate Wait	B-AHU-3	148	9	1332	4	Office Space	5	0.06		29		270
6234-08	Janitor	B-AHU-3	40	8	320	0	Storage	0	0.12	20	5		-
6234-09	AGV Staging	B-AHU-3	272	8	2176	0	Storage	0	0.12		33		145
6234-10	Alcove	B-AHU-3	34	8	272	0	Storage	0	0.12		4		
6271-01	Conference	B-AHU-3	245	8.5	2082.5	8	Conference	5	0.06		55		310
6271-02	Conference	B-AHU-3	231	8.5	1963.5	7	Conference	5	0.06		49		230
6271-03	Female Toilet	B-AHU-3	123	8	984	0	Restroom			70			75
6271-04	Electrical	B-AHU-3	186	8	1488	0	Electrical						0
6271-05	Conference	B-AHU-3	424	8.5	3604	22	Conference	5	0.06		135		535
6271-06	Conference	B-AHU-3	396	8.5	3366	13	Conference	5	0.06		89		605
6271-07	Conference	B-AHU-3	255	8.5	2167.5	9	Conference	5	0.06		60		350
6271-08	Conference	B-AHU-3	233	8.5	1980.5	3	Conference	5	0.06		29		210
6271-C01	Corridor	B-AHU-3	119	8.5	1011.5	0	Corridor	0	0.06		7		40
6271-C02	Corridor	B-AHU-3	194	8.5	1649	0	Corridor	0	0.06		12		55
6272-01	Red Cross	B-AHU-3	175	8	1400	3	Office Space	5	0.06		26		180
6272-02	SEC W/Visitor Wait	B-AHU-3	128	8	1024	3	Office Space	5	0.06		23		260
6272-03	Senior Clinical NCO	B-AHU-3	95	8	760	3	Office Space	5	0.06		21		190
6272-04	Chief/Customer Service	B-AHU-3	99	8	792	3	Office Space	5	0.06		21		195
6272-05	Healthcare NCO	B-AHU-3	95	8	760	3	Office Space	5	0.06		21		195
6272-06	Chief/Nursing Admin	B-AHU-3	122	8	976	3	Office Space	5	0.06		22		190
6272-07	Admin/Nurse Recruiter	B-AHU-3	98	8	784	3	Office Space	5	0.06		21		145
6272-08	Night Admin	B-AHU-3	122	8	976	3	Office Space	5	0.06		22		205
6272-09	Interview	B-AHU-3	119	8	952	3	Office Space	5	0.06		22		85
6272-10	AV Equipment	B-AHU-3	60	8	480	1	Storage	0	0.12		7		50
6272-11	COMM	B-AHU-3	157	8	1256	0	Storage	0	0.12		19		40
6272-12	Electrical	B-AHU-3	165	8	1320	0	Electrical						0
6272-13	Copy/File	B-AHU-3	76	8	608	1	Office Space	5	0.06	38	10		175
6272-14	Interview	B-AHU-3	115	8	920	3	Office Space	5	0.06		22		85
6272-15	Interview	B-AHU-3	119	8	952	3	Office Space	5	0.06		22		85
6272-C02	Corridor	B-AHU-3	831	8.5	7063.5	0	Corridor	0	0.06		50		220
6273-01	Conference	B-AHU-3	389	8.5	3306.5	0	Conference	5	0.06		23		575
6273-02	Conference	B-AHU-3	294	8.5	2499	0	Conference	5	0.06		18		305
6273-03	Assembly Hall	B-AHU-3	2600	9	23400	220	Auditorium seating area	7.5	0.06		1806		4680
6273-04	Emergency OPS	B-AHU-3	434	8	3472	9	Office Space	5	0.06		71		690
6273-05	Classroom Writing	B-AHU-3	397	8	3176	20	Lecture Classroom	7.5	0.06		174		495
6273-06	Computer Training	B-AHU-3	388	8	3104	8	Lecture Classroom	7.5	0.06		83		480

6273-C01	Corridor	B-AHU-3	1166	8.5	9911	0	Corridor	0	0.06		70	335
6274-01	Infection Control	B-AHU-3	119	8	952	3	Office Space	5	0.06		22	90
6274-02	DIR CNTP	B-AHU-3	96	8	768	3	Office Space	5	0.06		21	195
6274-03	Staff Lounge	B-AHU-3	143	8	1144	4	Office Space	5	0.06		29	280
6274-04	Nurse Research	B-AHU-3	100	8	800	2	Office Space	5	0.06		16	195
6274-05	Nurse Research	B-AHU-3	98	8	784	2	Office Space	5	0.06		16	195
6274-06	Nurse Research	B-AHU-3	99	8	792	2	Office Space	5	0.06		16	225
6274-07	Chief/Nursing Research	B-AHU-3	112	8	896	2	Office Space	5	0.06		17	250
6274-08	Copy/File	B-AHU-3	81	8	648	1	Office Space	5	0.06	41	10	175
6274-09	Nurse Research	B-AHU-3	100	8	800	3	Office Space	5	0.06		21	95
6274-10	Nurse Methods	B-AHU-3	100	8	800	3	Office Space	5	0.06		21	95
6274-11	Staff Toilet	B-AHU-3	51	8	408	1	Restroom			70		-
6274-12	Staff Toilet	B-AHU-3	51	8	408	1	Restroom			70		-
6274-13	Storage	B-AHU-3	92	9	828	0	Storage	0	0.12		11	60
6274-14	Infection Control Staff	B-AHU-3	119	8	952	3	Office Space	5	0.06		22	145
6274-C01	Corridor	B-AHU-3	708	8.5	6018	0	Corridor	0	0.06		42	200
6311-01	Classroom	B-AHU-3	641	8	5128	29	Lecture Classroom	7.5	0.06		256	715
6311-02	Male Toilet	B-AHU-3	142	8	1136	2	Restroom			140		60
6311-03	Female Toilet	B-AHU-3	136	8	1088	2	Restroom			140		-
6311-04	Janitor	B-AHU-3	55	8	440	0	Storage	0	0.12	28	7	-
6311-05	Elevator Vestibule	B-AHU-3	348	10	3480	0	Main Entry Lobbies	5	0.06		21	840
6311-C01	Corridor	B-AHU-3	49	8.5	416.5	0	Corridor	0	0.06		3	0
6312-01	Storage	B-AHU-3	204	8	1632	0	Storage	0	0.12		24	125
6312-02	Secretary w/ Visitor	B-AHU-3	146	8	1168	4	Office Space	5	0.06		29	135
6312-03	Research Asst/Protocol	B-AHU-3	177	8	1416	3	Office Space	5	0.06		26	340
6312-04	Training Personnel	B-AHU-3	278	8	2224	6	Office Space	5	0.06		47	470
6312-05	Copy/File	B-AHU-3	95	8	760	0	Office Space	5	0.06	48	6	140
6312-06	Chief, Training	B-AHU-3	108	8	864	3	Office Space	5	0.06		21	145
6312-07	Reception (Secretary)	B-AHU-3	59	8	472	3	Office Space	5	0.06		19	105
6312-08	NCOIC	B-AHU-3	96	8	768	3	Office Space	5	0.06		21	190
6312-09	AV Supply	B-AHU-3	55	8	440	0	Office Space	5	0.06		3	40
6312-10	Computer Training	B-AHU-3	376	8	3008	10	Office Space	5	0.06		73	645
6312-C01	Hallway	B-AHU-3	70	8.5	595	0	Corridor	0	0.06		4	0
6312-C02	Hallway	B-AHU-3	73	8.5	620.5	0	Corridor	0	0.06		4	0
6312-C03	Corridor	B-AHU-3	141	8.5	1198.5	0	Corridor	0	0.06		8	40
6312-C04	Corridor	B-AHU-3	74	8.5	629	0	Corridor	0	0.06		4	0

Appendix C

Lighting Power Density for Level 6

Room Number	Room Name	Space Area (ft2)	Lighting Power Density (W/ft ²)	Wattage
6171-01	Hospital Commander	245	1.11	272
6171-02	Toilet / Shower	66	0.98	65
6171-03	Command Driver w/ File Storage	134	1.11	149
6171-04	Executive Officer	132	1.11	147
6171-05	Toilet / Shower	101	0.98	99
6171-06	Kitchen	116	0.92	107
6171-07	Copy	112	0.72	81
6171-08	Commander Secretary	95	1.11	105
6171-09	Command Sergeant Major	182	1.11	202
6171-10	DCN Secretary	95	1.11	105
6171-11	Command File	59	0.63	37
6171-12	Closet	20	1.24	25
6171-C01	Corridor	336	0.99	333
6172-01	Files and Storage	128	0.63	81
6172-02	Command Staff Lounge	151	0.92	139
6172-04	Paralegals	159	1.11	176
6172-05	Medical Claims	87	1.11	97
6172-06	SJA (Staff Judge Advocate)	111	1.11	123
6172-07	Conference	505	1.23	621
6173-01	DCN	153	1.11	170
6173-02	DCCS	159	1.11	176
6173-03	Waiting Room	106	0.54	57
6173-04	Conference, COMM	376	1.11	417
6173-05	Electrical	141	0.63	89
6173-06	COMM	157	0.63	99
6173-07	Manager	77	1.11	85
6173-08	Chief, MAO	126	1.11	140
6173-09	Protocol	122	1.11	135
6173-10	Admin Resident	133	1.11	148
6173-11	DCN SGM	160	1.11	178
6173-12	DCOS	137	1.11	152
6173-13	DCA	154	1.11	171
6173-14	DCCS Secretary	107	1.11	119
6173-15	DCA Secretary	93	1.11	103
6173-16	Reception Filing	195	1.11	216
6173-C01	Corridor	145	0.99	144
6173-C02	Corridor	47	0.99	47
6173-C03	Corridor	290	0.99	287
6173-C04	Hallway	319	0.99	316
6173-C05	Hallway	103	0.99	102
6173-C06	Hallway	63	0.99	62
6173-C07	Corridor	384	0.99	380
6174-01	Copy/File/Storage	179	0.72	129
6174-02	Attorney	122	1.11	135

6174-03	Attorney	116	1.11	129
6174-04	Paralegals	169	1.11	188
6174-05	Pub Affairs Officer	125	1.11	139
6174-06	Electronic Illustration	276	1.11	306
6174-07	DCCS SGM	102	1.11	113
6174-08	Electrical	176	0.63	111
6174-09	Janitor	56	0.63	35
6174-10	UPS	77	0.63	49
6174-11	Reception	100	0.54	54
6174-12	Waiting Room	69	0.54	37
6174-13	Copy/File/Storage	115	0.72	83
6174-14	Admin Cubicle	110	0.98	108
6174-C01	Corridor	921	0.99	912
6174-C02	Corridor	278	0.99	275
6174-C03	Corridor	122	0.99	121
6231-01	Elevator Vestibule	273	0.64	175
6231-02	Janitor	58	0.63	37
6231-03	Adjutant Office	113	1.11	125
6231-04	Female Toilet	243	0.98	238
6231-05	Male Toilet	251	0.98	246
6231-06	Conference	274	1.23	337
6231-07	Conference	180	1.23	221
6231-08	Command Support	120	1.11	133
6231-C01	Corridor	1438	0.99	1424
6231-C02	Corridor	215	0.99	213
6232-01	Adjutant Office	111	1.11	123
6232-02	Adjutant Office	110	1.11	122
6232-03	Copy	108	0.72	78
6232-04	Chaplain Assistant	119	1.11	132
6232-05	Chaplain Office	112	1.11	124
6232-06	Chaplain Office	117	1.11	130
6232-07	Chaplain Office	128	1.11	142
6232-08	Chaplain Office	111	1.11	123
6232-09	Librarian Office	119	1.11	132
6232-10	PC Workstation	144	1.71	246
6232-11	Circulation Reference	99	1.71	169
6232-12	Book Cart / Assembly	118	1.71	202
6232-13	Conference	271	1.23	333
6232-14	Conference / Interview	274	1.23	337
6232-15	Conference	271	1.23	333
6232-16	Secretary w/ Visitor	143	1.11	159
6232-17	Library Staff Workroom	120	1.11	133
6232-18	Copy	71	0.72	51
6232-C01	Corridor	1016	0.99	1006
6232-C02	Corridor	137	0.99	136
6232-C03	Hallway	137	0.99	136
6233-02	Pneumatic Chute	171	0.42	72

6233-03	Electrical	188	0.42	79
6233-04	Electrical	153	0.42	64
6233-05	Vending Area	171	0.54	92
6233-06	Vending Area	498	0.54	269
6234-01	Elevator Vestibule	257	0.64	164
6234-02	Periodical Area	120	1.71	205
6234-03	Reading Area	244	1.06	259
6234-04	Reference Holdings	359	1.71	614
6234-05	Book Stack Area	408	1.71	698
6234-06	Patient Advocate	242	1.11	269
6234-07	Patient Advocate Wait	148	1.11	164
6234-08	Janitor	40	1.24	50
6234-09	AGV Staging	272	0.63	171
6234-10	Alcove	34	1.24	42
6271-01	Conference	245	1.23	301
6271-02	Conference	231	1.23	284
6271-03	Female Toilet	123	0.98	121
6271-04	Electrical	186	0.42	78
6271-05	Conference	424	1.23	522
6271-06	Conference	396	1.23	487
6271-07	Conference	255	1.23	314
6271-08	Conference	233	1.23	287
6271-C01	Corridor	119	0.99	118
6271-C02	Corridor	194	0.99	192
6272-01	Red Cross	175	1.11	194
6272-02	SEC W/Visitor Wait	128	1.11	142
6272-03	Senior Clinical NCO	95	1.11	105
6272-04	Chief/Customer Service	99	1.11	110
6272-05	Healthcare NCO	95	1.11	105
6272-06	Chief/Nursing Admin	122	1.11	135
6272-07	Admin/Nurse Recruiter	98	1.11	109
6272-08	Night Admin	122	1.11	135
6272-09	Interview	119	1.11	132
6272-10	AV Equipment	60	1.24	74
6272-11	COMM	157	0.63	99
6272-12	Electrical	165	0.42	69
6272-13	Copy/File	76	0.72	55
6272-14	Interview	115	1.11	128
6272-15	Interview	119	1.11	132
6272-C02	Corridor	831	0.99	823
6273-01	Conference	389	1.23	478
6273-02	Conference	294	1.23	362
6273-03	Assembly Hall	2600	0.63	1638
6273-04	Emergency OPS	434	1.23	534
6273-05	Classroom Writing	397	1.24	492
6273-06	Computer Training	388	1.24	481
6273-C01	Corridor	1166	0.99	1154

6274-01	Infection Control	119	1.11	132
6274-02	DIR CNTP	96	1.11	107
6274-03	Staff Lounge	143	1.11	159
6274-04	Nurse Research	100	1.11	111
6274-05	Nurse Research	98	1.11	109
6274-06	Nurse Research	99	1.11	110
6274-07	Chief/Nursing Research	112	1.11	124
6274-08	Copy/File	81	0.72	58
6274-09	Nurse Research	100	1.11	111
6274-10	Nurse Methods	100	1.11	111
6274-11	Staff Toilet	51	0.98	50
6274-12	Staff Toilet	51	0.98	50
6274-13	Storage	92	0.63	58
6274-14	Infection Control Staff	119	1.11	132
6274-C01	Corridor	708	0.99	701
6311-01	Classroom	641	1.24	795
6311-02	Male Toilet	142	0.98	139
6311-03	Female Toilet	136	0.98	133
6311-04	Janitor	55	0.63	35
6311-05	Elevator Vestibule	348	0.64	223
6311-C01	Corridor	49	0.99	49
6312-01	Storage	204	0.63	129
6312-02	Secretary w/ Visitor	146	1.11	162
6312-03	Research Asst/Protocol	177	1.11	196
6312-04	Training Personnel	278	1.11	309
6312-05	Copy/File	95	0.72	68
6312-06	Chief, Training	108	1.11	120
6312-07	Reception (Secretary)	59	1.11	65
6312-08	NCOIC	96	1.11	107
6312-09	AV Supply	55	1.11	61
6312-10	Computer Training	376	1.71	643
6312-C01	Hallway	70	0.99	69
6312-C02	Hallway	73	0.99	72
6312-C03	Corridor	141	0.99	140
6312-C04	Corridor	74	0.99	73